

Ireland's Largest
Manufacturer of
fabric reinforcing
mesh

www.brcmcMahon.com



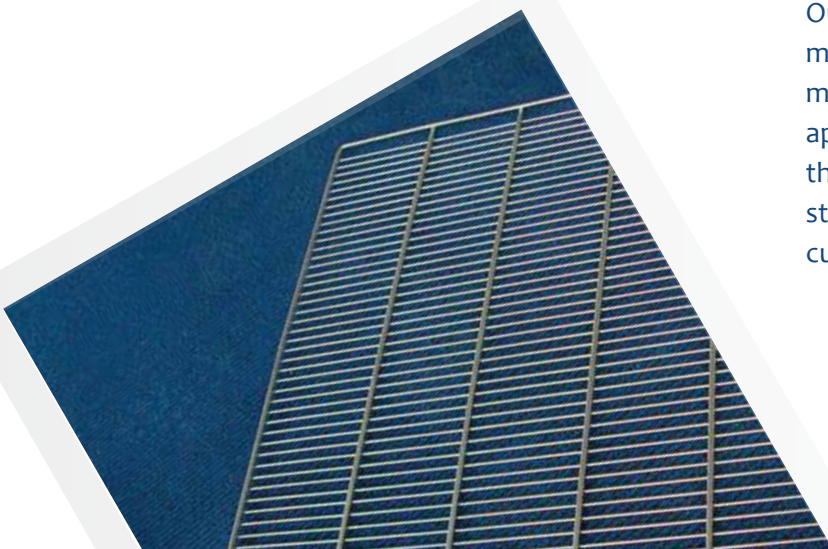


CONTENTS

	PAGE
Standard Mesh	3
Merchant Sheet	3
Eco Mesh	4
Flying End Mesh	4
Tailored Mesh	4
Reinforcing Bar	5
Conticoil	5
Pipe Wire	5
Engineering Weldmesh	6-7
Continuous Highchairs	8
Brickforce	9
Tying Wire	10
Safety End Cap	10
Stacking Basket	11
Stackable Basket	11
Tapered D Bin	12
Rectangular collapsible Bins	12
Flat Tray	13
Lockable Plastic Container Holder	13
Slot Wall Fittings	14
Radiator Covers	14
Small Baskets for Stands	14
Under Desk Shelf Units	14
Round Waste Baskets	15
Storage Lockers	15
Wire Shapes	15
Wheeled Storage Unit	15
Pallet Stillages	15

MISSION STATEMENT

Our company's vision is to be recognised market leaders who competitively manufacture and supply quality approved reinforcement products through qualified and experienced staff who strive to exceed our valued customers' expectations.



MESH

STANDARD MESH

Traditional Standard Mesh fabric is manufactured in sheet size 4.8 metre x 2.4 metre

Both A and B range are available ex stock

C range fabric is manufactured to order

D49 is available ex stock in sheet size 4.8 metre x 2.4 metre

Reference	Sheet Size	No. Per Bale
A393	4.8 x 2.4	30
A252	4.8 x 2.4	40
A193	4.8 x 2.4	50
A142	4.8 x 2.4	50
B1131	4.8 x 2.4	16
B785	4.8 x 2.4	20
B503	4.8 x 2.4	30
D49	4.8 x 2.4	50



MERCHANT SHEET

Merchant sheets mesh are available ex stock in sheet size 3.6 metre x 2.0 metre.

The advantages over standard 4.8 x 2.4 mesh sheets are as follows;

Convenience for manual handling

Less storage space required on site

Safe transportation

Reference	Sheet Size	No. Per Bale
A393	3.6 x 2.0	30
A252	3.6 x 2.0	40
A142	3.6 x 2.0	50



ECO MESH

Eco friendly mesh has been introduced to the market in recent times. This fabric mesh retains the same centres as standard fabric mesh with the exception of the external overhangs which change from 100mm to approximately 200mm.

Eco mesh may be used in lieu of standard mesh for most applications.

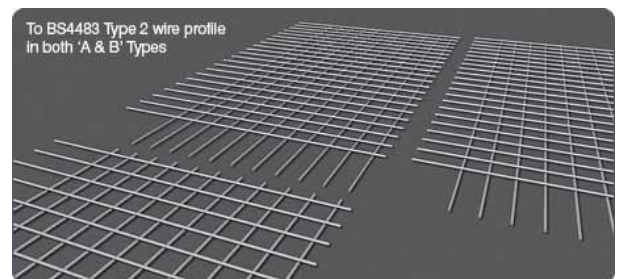
The full range of Eco mesh is available ex stock



FLYING END MESH

As the Diagrams show, with this specific type of mesh there is no build-up of overlapping wires, thereby keeping the height of the placed mesh at an absolute minimum. The Flying End® sheet sizes listed available ex- stock.

Reference	Sheet Size
A 393	4.8m x 2.4m or 5.9m x 2.3m
A 252	4.8m x 2.4m or 5.9m x 2.3m
A 193	4.8m x 2.4m
A 142	4.8m x 2.4m
B 1131	4.8m x 2.4m
B 785	4.8m x 2.4m
B 503	4.8m x 2.4m



Flying end



Traditional Mesh



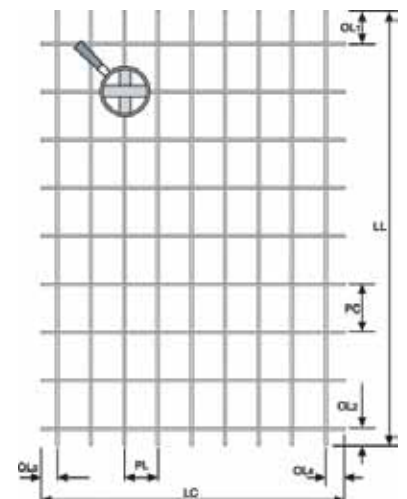
TAILORED MESH

Made to Measure Fabric

BRC McMahon can manufacture fabric reinforcement standard A, B & C types in sizes to suit your application (subject to machine capability, transport and handling on site). With or without Flying Ends®, a more cost effective solution can be achieved by reducing cutting, wastage and lapping congestion.

BRC McMahon Tailored Fabric Reinforcement?

Designed to suit specific projects, BRC McMahon can provide mesh that offers an alternative to conventional loose rebar. Supplied with or without Flying Ends®, reinforcement in various diameters can be offered in sheet sizes to suit your contract.



REINFORCING BAR

STOCK LENGTH

Stock Length

Available in diameters 10mm to 40mm (inclusive) and in lengths of 6m to 15m. This product is suitable for use by precast concrete manufacturers and other reinforcement applications and complies with BS 4449, it is also CARES approved.

Lengths	Diameter mm
6 metre	10, 12, 16, 20, 25
12 metre	10, 12, 16, 20, 25, 32, 40
14 metre	16, 20, 25, 32, 40
15 metre	20, 25, 32, 40



CUT TO LENGTH BAR

Cut to Length Bar

Available in diameters 6mm to 12mm (inclusive) and in lengths of 1.7m to 6m. This product is suitable for use by precast concrete manufacturers and complies with BS 4482.

Lengths	Diameter mm
1.7 metre	6, 7, 8, 10, 12
2 metre	6, 7, 8, 10, 12
3 metre	6, 7, 8, 10, 12
4 metre	6, 7, 8, 10, 12
5 metre	6, 7, 8, 10, 12
6 metre	6, 7, 8, 10, 12



REINFORCING COIL

CONTICOIL

Conticoil is a cold stretched, high yield, ribbed reinforcing wire. Produced in the form of compact layer wound coil in sizes of 8, 10, 12, and 16mm. This product is suitable for use in automatic link bending machines and coil fed straightening and cutting machines, and complies with BS 4482.



PIPE WIRE

Pipe Wire is used for formulating support cages for concrete pipes. Supplied in profiled wire with a three line indentation. Wire diameters available from 6mm to 12mm. Coil sizes vary from 250kg up to 2,000kg.



ENGINEERING WELDMESH

ENGINEERING WELDMESH

Engineering Weldmesh is used for its strength and versatility, there are few engineering materials to rival Weldmesh. This famous name has become a by-word for welded steel mesh all over the world. Weldmesh is a specialist product and is widely specified for a multitude of uses throughout industry, building & construction, agriculture and horticulture.

Manufactured from bright drawn mild steel wire, the mesh is electrically welded at each intersection. After manufacture it can either be galvanized plastic coated or remain in its original finish – copper coated. Weldmesh is also produced from either light galvanized or heavily galvanized wire depending on the final application of the product.

ENGINEERING MESH – COPPER + HOT DIP GALVANISED

Internal ope	Gauge	Sheet size
1" x 1"	10G	6' x 3'
1" x 1"	10G	8' x 4'
1" x 1"	12G	8' x 4'
1" x 2"	10G	8' x 4'
1" x 1"	8G	8' x 4'
2" x 2"	10G	8' x 4'
2" x 2"	12G	8' x 4'
2" x 2"	6G	8' x 4'
2" x 2"	8G	6' x 3'
2" x 2"	8G	8' x 4'
3" x 0.5"	12G	8' x 4'
3" x 3"	10G	8' x 4'
3" x 1"	10G	8' x 4'
3" x 3"	6G	6' x 3'
3" x 3"	6G	8' x 4'
3" x 3"	8G	8' x 4'



Quality Standards

Gauge Sizes: dimensions shown are for galvanised wire. Weldmesh self-colour specifications will vary between 0.04mm and 0.12mm below the galvanised wire dimension as shown in the Weldmesh Gauges Guide.

Galvanised Weldmesh: through our unique smooth inline galvanised process, Weldmesh is hot dip galvanised to the highest standards and conforms to BS EN 10244-2 Class A. Should a thicker coat be necessary, i.e. BS EN ISO 1461 (replaces BS729), this can be obtained on request. Pre-galvanised Weldmesh (mesh made from galvanised wire) can also be produced on request.

OTHER PRODUCTS

CONTINUOUS HIGHCHAIRS

For supporting fabric in ground floor slabs and spacing fabric in walls. Supplied in standard 2m lengths. Also available in heights up to 300mm. Manufactured from cold reduced wire to BS4482.

Usage

Approximately one 2m length per 3m² of fabric.

Special lengths

Continuous high chairs are also available in special lengths to order. Minimum 1m, maximum 6m in 100mm increments.

Reference	Height mm
CHL50	50
CHL60	60
CHL75	75
CHL80	80
CHL90	90
CHL105	105
CHL120	120
CHL135	135
CHL150	150
CHL165	165
CHL180	180
CHL200	200
CHL230	230
CHL250	250
CHL280	280



OTHER PRODUCTS

BRICKFORCE

Structural Reinforcement and Crack Control

Brickforce is designed for structural reinforced masonry applications. Brickforce complies fully with the requirements of the reinforced masonry design code BS 5628- 2, and consists of two parallel wires joined by in-line welded cross wires. The main wires are manufactured to a flattened profile to enable the product to be easily located into the mortar joint without steel build-up problems at lap positions corners/junctions, or when used in conjunction with wall ties.

Brickforce is available in a range of different main wire diameters for specific structural loading situations, and in a variety of product widths to suit different block or brick leaf construction. To comply with quality assurance requirements and assist in product traceability, each strip of Brickforce is uniquely marked at regular intervals with the brand name, reference and manufacturing code.



Specification: Material Finishes

Stainless steel wire to BS 5628-2

Galvanised steel wire zinc coated to BS EN 10244-2

Specification: Main Wires

Flattened profile, equivalent diameter to suit design requirements with a minimum characteristic tensile strength of 500 N/mm²

Specification: Pack Sizes

Manufactured in 2.7m long strips and supplied in packs

Stainless steel Brickforce packs contain 20 strips (54m per pack)

Galvanised Brickforce packs contain 25 strips (67.5m per pack) Minimum overlap 225mm

OTHER PRODUCTS

TYING WIRE

Black annealed 16 gauge wire for tying reinforcement bar and fabric.

Reference	Description
16G	16 Gauge Black Annealed



SAFETY END CAPS

Highly visible plastic protection caps for exposed reinforcing bar.

Reference	To suit bar dia.
RPC 06-16mm	6-16
RPC 16-32mm	16-32



WIRE INDUSTRIES

STACKING BASKET

Available in the following width

490mm: 580mm: 630mm: 1000mm

All units have standard side panels

Finishes available: Plastic Coated

Colours available: Green, Red, Blue, Brown, Black

Internal dividers can also be supplied.

Typical Uses: Display of light weight food and non-food items e.g. Crisps, Fruit, Small clothing items, pre packed stationery, smaller items in builders providers.



STACKABLE BASKET

Sizes available; small and large

Finish available: Plastic Coated

Standard Colours: Green, Blue, Red.

Other Colours available on request.

Features:

- Two 14mm steel tubes along the length of unit for additional strength.
- Tapered sides for ease of transport
- Supplied with wing nuts to facilitate stacking
- Suitable for outside use

Typical uses:

- Large Size (Approx. 42mm Square mesh) Storage of larger items such as 4" plastic pipe fitting, (for which the unit was originally designed) Brush heads etc.
- General storage in hardware/DIY stores, garages, warehouses.
- Small Size (approx. 25mm x 43mm mesh) storage of smaller items in similar settings



WIRE INDUSTRIES

TAPERED D BIN

Finish available: Plastic Coated

Standard colours: Green, White, Cream, Red, Blue, Yellow

Features:

- Adjustable Shelf
- Display sign holder available

Typical uses: Retail outlets for items such as toiletries, sponges, stationery, small items of clothing etc.



RECTANGULAR COLLAPSIBLE BINS

Finish available: Bright Zinc Lacquered

Features:

- Shelf Adjustable to 4 different Heights
- Display holder available

Typical Uses:

- Sturdy and flexible Unit.
- Capable of being filled with cans or heavier items of hardware.
- If shelf is placed at highest level (on top unit) can be used for higher-level display.



WIRE INDUSTRIES

FLAT TRAY

Manufactured to customer requirements.

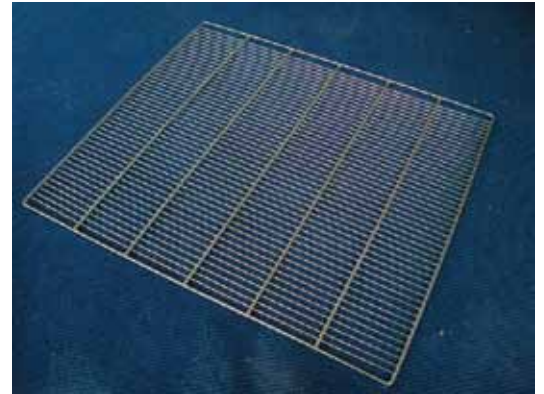
Finishes available: Plastic coated or Zinc Plated.

Normal Specifications required:

- Length, Width (Outside measurements)
(Max outside measurements: 1200mm x 1200mm)
- Wire pitch

Typical Usages:

- Cooling trays for bakeries
- Food storage units
- Replacement shelving for storage/chilled units.



LOCKABLE PLASTIC CONTAINER HOLDER

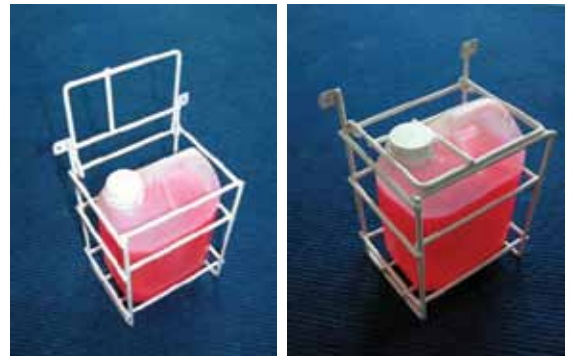
Internal measurements: 160mm wide, 110mm deep, 210mm high.

Finish available: Plastic coated

Colours available: Green, Red, Blue, Brown, Black, White.

Typical Uses:

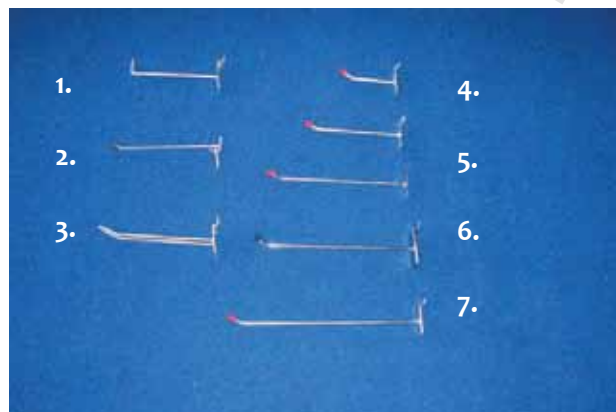
- Hospitals
- Dairy Industry



WIRE INDUSTRIES

SLOT WALL FITTINGS

1. 6" 90 Degree Bend
2. 6" Peg Hook 1" Centres
3. 6" Euro Hook
4. 3" Single Hole Black Plate
5. 6" Single Hole Black Plate
6. 9" Single Hole Black Plate
7. 10" Single Hole Black Plate
8. 12" Double Hole Black Plate



RADIATOR COVERS

Max Height: 1200mm

Max Width: 1200mm

Also available: Light Guards, Fire Guards etc.



SMALL BASKETS FOR STANDS

Available: To Customers' Requirements



UNDER DESK SHELF UNITS

To Hold Books etc.

***Sizes can be changed to customers' requirements.**



WIRE INDUSTRIES

ROUND WASTE BASKETS

Max Diameter: 700mm

Max Height: 1200mm

Available to customer requirements



STORAGE LOCKERS

Manufactured to customers' requirements
Zinc Coated as standard also available powder coated



WIRE SHAPES

Manufactured to customers' Requirements



WHEELED STORAGE UNIT

Height: 1900mm

Width: 1135mm

Depth: 665mm

Typical uses: Small/Medium item display, useful in that it can be replenished off the sales floor and wheeled into position as required.



PALLET STILLAGES

Measurements: 1m x 1m x 1m

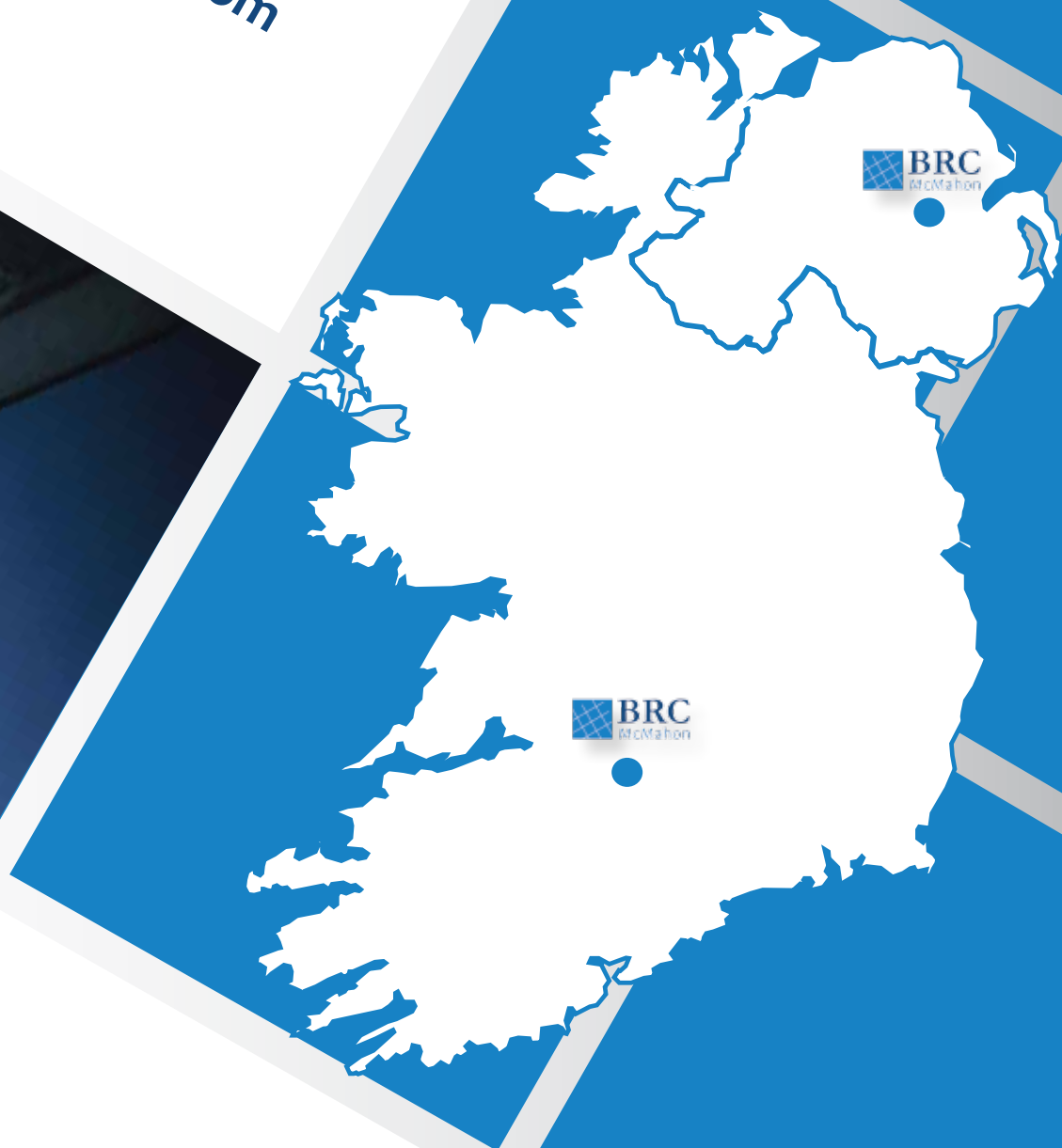


Also available manufactured to customer requirements:

Potato Riddles Light Guards Hen Cage Gate

Please contact us for further information.

www.brcmcmahon.com



contact us:

BRC Tipperary: Rosanna Road,
Tipperary Town, Co. Tipperary, Ireland.
Tel: 062 51679 Fax: 062 51940
Email: tipperary@brcmcmahon.com

BRC Cookstown: 21b Drapersfield Rd,
Cookstown, County Tyrone, NI, BT80 8RS.
Tel: +44 (028) 8676 4070
Fax: +44 (028) 8676 5764
Email: cookstown@brcmcmahon.com

